

DOMESTIC - ELECTRICAL

MK3 Surface Mounted Electricity Meter Box

M06004



PRODUCT VIEW



OPTIONAL EXTRAS

- Replacement door M00034 383mm wide x 550mm high

PRODUCT PROFILE

Box Dimensions

Width: 400mm
Height: 560mm
Depth: 215mm

Brickwork Opening

Width: Not applicable
Height: Not applicable
Depth: Not applicable

Model Number: M06004

SPECIFICATION

Meterbox Material: glass reinforced plastic
Meterbox Colour: White
Baseboard: Fitted baseboard

INSTALLATION ENVIRONMENT

Cable entry on the face of the wall or via the cavity

KEY FEATURES

- Weather resistant
- Will not rot or corrode
- Suitable for all domestic electric meters
- Meter box key included
- Fire retardant to E.S.I. Standard 12-3

REFERENCE

DAT0006
V.01
15/09/2017

Contact us:
Head Office: Cubis Systems, New Street, Biddulph Moor, Staffordshire, ST8 7NL, UK
Telephone: +44 (0)800 783 5489
Email: sales@meterboxes.co.uk

DOMESTIC - ELECTRICAL

Slimline Recessed Electricity Meter Box

M35075



PRODUCT VIEW



OPTIONAL EXTRAS

- Replacement door M35076 253mm wide x 784mm high

PRODUCT PROFILE

Box Dimensions

Width: 279mm
Height: 828mm
Depth: 210mm

Brickwork Opening

Width: 235mm
Height: 770mm
Depth: 150mm

Model Number: M35075

SPECIFICATION

Meterbox Material: glass reinforced plastic
Meterbox Colour: White
Baseboard: Fitted baseboard

INSTALLATION ENVIRONMENT

Cable entry on the face of the wall or via the cavity

KEY FEATURES

- Weather resistant
- Will not rot or corrode
- Suitable for all domestic electric meters
- Meter box key included
- Pre-drilled cable entry positions
- Fire retardant to E.S.I. Standard 12-3

REFERENCE

DAT0008
V.01
15/09/2017

Contact us:
Head Office: MCL Composites Ltd, New Street, Biddulph Moor, Staffordshire, ST8 7NL, UK
Telephone: +44 (0)800 783 5489
Email: sales@meterboxes.co.uk

DOMESTIC - ELECTRICAL

Large (3-phase) Recessed Electricity Meter Box

M00036



PRODUCT VIEW



OPTIONAL EXTRAS

- Replacement door M00037 509mm wide x 737mm high

PRODUCT PROFILE

Box Dimensions

Width: 550mm
Height: 770mm
Depth: 210mm

Brickwork Opening

Width: 475mm
Height: 700mm
Depth: 145mm

Model Number: M00036

SPECIFICATION

Meterbox Material: glass reinforced plastic
Meterbox Colour: White
Baseboard: Fitted baseboard

INSTALLATION ENVIRONMENT

Cable entry on the face of the wall or via the cavity

KEY FEATURES

- Weather resistant
- Will not rot or corrode
- Suitable for all 3-phase supply
- Meter box key included
- Fire retardant to E.S.I. Standard 12-3

REFERENCE

DAT0001
V.01
15/09/2017

Contact us:
Head Office: MCL Composites Ltd, New Street, Biddulph Moor, Staffordshire, ST8 7NL, UK
Telephone: +44 (0)800 783 5489
Email: sales@meterboxes.co.uk

DOMESTIC - ELECTRICAL

Mitras Recessed Electricity Meter Box

M01023



PRODUCT VIEW



OPTIONAL EXTRAS

- Replacement door M00034 383mm wide x 550mm high

PRODUCT PROFILE

Box Dimensions

Width: 409mm
Height: 595mm
Depth: 210mm

Brickwork Opening

Width: 365mm
Height: 535mm
Depth: 150mm

Model Number: M01023

SPECIFICATION

Meterbox Material: Glass reinforced plastic
Meterbox Colour: White
Baseboard: Fitted baseboard

INSTALLATION ENVIRONMENT

Cable entry on the face of the wall or via the cavity

KEY FEATURES

- Weather resistant
- Will not rot or corrode
- Suitable for all domestic electric meters
- Meter box key included
- Pre-drilled cable entry positions
- Fire retardant to E.S.I. Standard 12-3

REFERENCE

DAT0003
V.02
05/09/2018

Contact us:
Head Office: Cubis Systems, New Street, Biddulph Moor, Staffordshire, ST8 7NL, UK
Telephone: +44 (0)800 783 5489
Email: sales@meterboxes.co.uk

DOMESTIC - ELECTRICAL

Large (3-phase) Surface Mounted Electricity Meter Box

M00045



PRODUCT VIEW



OPTIONAL EXTRAS

- Replacement door M00037 509mm wide x 737mm high

PRODUCT PROFILE

Box Dimensions

Width: 520mm
Height: 750mm
Depth: 210mm

Brickwork Opening

Width: On request
Height: On request
Depth: On request

Model Number: M00045

SPECIFICATION

Meterbox Material: glass reinforced plastic
Meterbox Colour: White
Baseboard: Fitted baseboard

INSTALLATION ENVIRONMENT

Cable entry on the face of the wall or via the cavity

KEY FEATURES

- Weather resistant
- Will not rot or corrode
- Suitable for 3-phase meter installations
- Meter box key included
- Fire retardant to E.S.I. Standard 12-3

REFERENCE

DAT0002
V.01
15/09/2017

Contact us:
Head Office: MCL Composites Ltd, New Street, Biddulph Moor, Staffordshire, ST8 7NL, UK
Telephone: +44 (0)800 783 5489
Email: sales@meterboxes.co.uk

M06004

MK3 Surface Mounted Electricity Meter Box

KEY FEATURES

- ✓ Weather resistant
- ✓ Will not rot or corrode
- ✓ Suitable for all domestic electric meters
- ✓ Meter box key included

SPECIFICATION

- ✓ Fitted baseboard
- ✓ Manufactured in glass reinforced plastic
- ✓ Fire retardant to E.S.I. Standard 12-3

INSTALLATION

- ✓ Easy installation - cable entry on the face of the wall or via the cavity

OPTIONAL EXTRAS

- ✓ Replacement door M00034
383mm wide x 550mm high

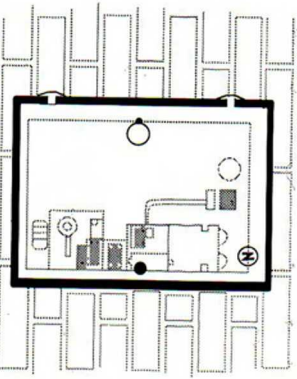


Box Dimensions

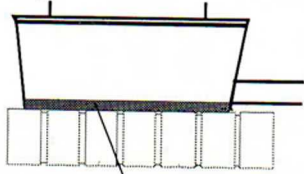
Width:	400mm	Depth:	215mm	Height:	560mm
--------	-------	--------	-------	---------	-------



Fixing screw 4 off



Meter Board



MK3 Surface Mounted Electricity Meter Box

 **Mitras**
Composites (UK) Ltd

www.meterboxes.co.uk

MK3 SURFACE MOUNTED ELECTRICITY METER BOX
INSTALLATION INSTRUCTIONS

MODEL NUMBER EB6

MANUFACTURED TO BS 8567:2011

M01023

Mitras™ Recessed Electricity Meter Box

KEY FEATURES

- ✓ Weather resistant
- ✓ Will not rot or corrode
- ✓ Suitable for all domestic electric meters
- ✓ Meter box key included

SPECIFICATION

- ✓ Fitted baseboard
- ✓ Manufactured in glass reinforced plastic
- ✓ Pre-drilled cable entry positions
- ✓ Fire retardant to E.S.I. Standard 12-3

INSTALLATION

- ✓ Easy installation - cable entry on the face of the wall or via the cavity

OPTIONAL EXTRAS

- ✓ Replacement door M00034
383mm wide x 550mm high

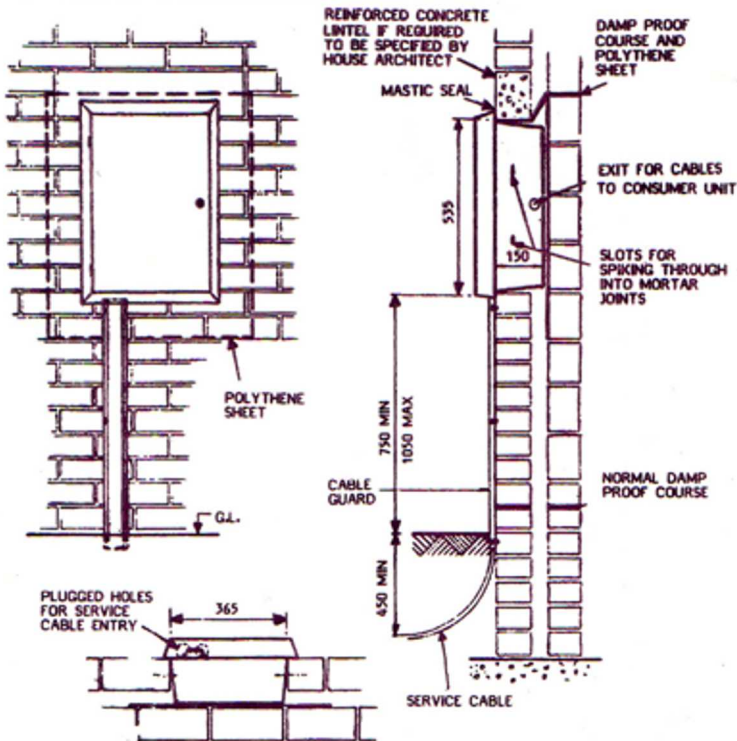


Box Dimensions		Brickwork Opening	
Width:	409mm	Width:	365mm
Depth:	210mm	Depth:	150mm
Height:	595mm	Height:	535mm



WARNING

CABLES TO CONSUMER MUST ENTER THROUGH THE PLUGGED HOLES IN THE RIGHT HAND SIDE OR BASE OF THE CABINET. THE COMPANY'S METERING EQUIPMENT CANNOT BE FITTED IF ENTRY IS MADE AT OTHER POSITIONS.



DOMESTIC - ELECTRICAL

Large WPD (3-phase) Recessed Electricity Meter Box

M00035



PRODUCT VIEW



OPTIONAL EXTRAS

- Replacement door M00037 509mm wide x 737mm high

PRODUCT PROFILE

Box Dimensions

Width: 550mm

Height: 770mm

Depth: 210mm

Brickwork Opening

Width: 475mm

Height: 700mm

Depth: 145mm

Complete Weight: 13.5kg

Model Number: M00035

SPECIFICATION

Meterbox Material: Glass reinforced plastic to BS 476 Part 7 Class 2

Meterbox Colour: White

Baseboard: Fitted with Fire retardant baseboard and including ramp board

INSTALLATION ENVIRONMENT

Cable entry on the face of the wall or via the cavity

KEY FEATURES

- Weather resistant
- Will not rot or corrode
- Suitable for all 3-phase supply
- Meter box key included
- Manufactured to BS 8467:2012
- Complete with door retainer strap

REFERENCE

DAT0001

V.1

10/01/2021

Contact us:

Head Office: MCL Composites Ltd, New Street, Biddulph Moor, Staffordshire, ST8 7NL, UK

Telephone: +44 (0)800 783 5489

Email: sales@meterboxes.co.uk